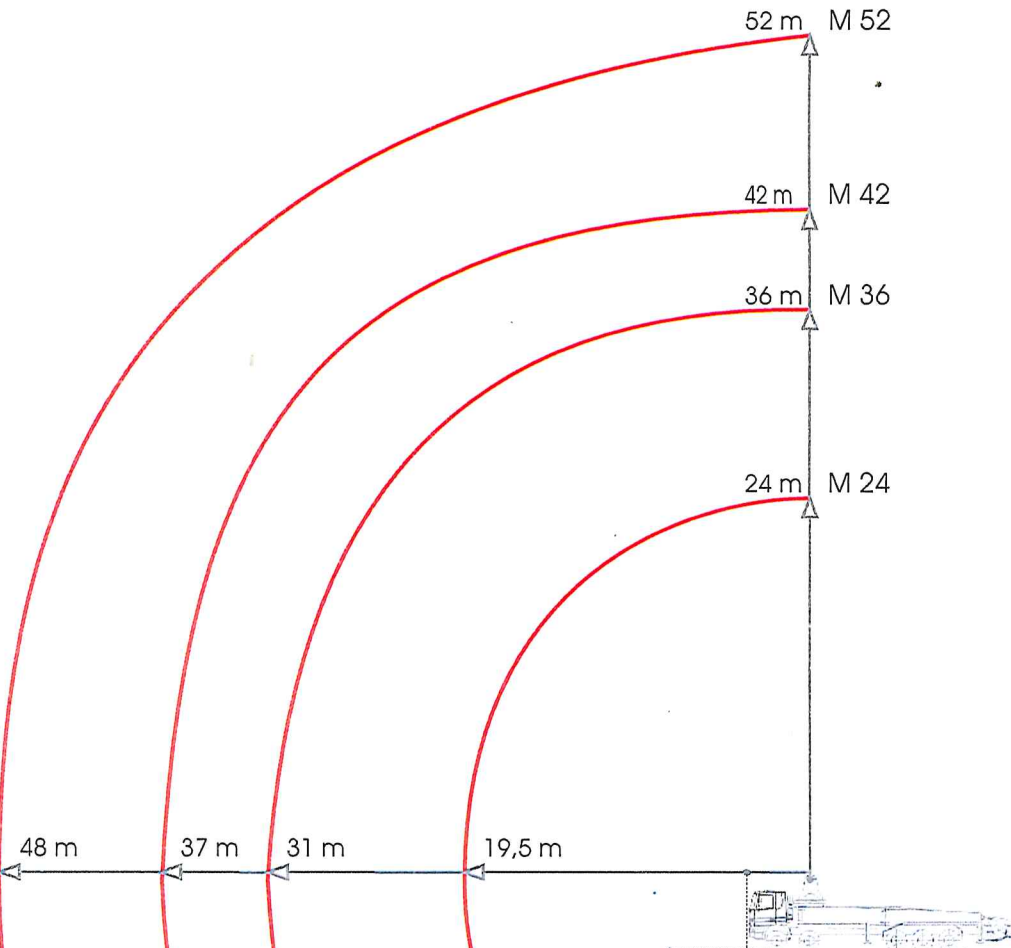


Betonpumpen - Arbeitsdiagramm



		Platzbedarf	max. Stützlast
14 m	M 24	6.0 m x 3.0 m	90 kN
24 m	M 36	6.5 m x 6.5 m	170 kN
31 m	M 42	8.0 m x 8.0 m	225 kN
38 m	M 52	10.5 m x 10.5 m	340 kN